



# August 2024 Newsletter



## Chapter P Officers

### Directors

John and Cindy Wood

### Assistant Directors

Bob & Donna Baum

### Treasurer

Jean Kitco

### Ride & Safety Coordinator

Rich Kitko

## Support Team

### Sunshine Team

Linda & Rick Ventresco

### Webmaster

Bob Baum

### Newsletter Editor

Kay Rickey

## Chapter P Gathering Information

**SATURDAY**

**August 10, 2024 9:00 AM**

**Lizard's Thicket  
4616 Augusta Rd. (US-1)**



## Table of Contents

Chapter Directors.....	2-4
Assistant Director .....	5
Safety/Ride Coordinator.....	6
Item for Sale.....	6
Dates to Remember .....	7
Dinner Rides/Birthdays, Anniversaries.....	7
EWMA / District Staff and Links .....	8
Upcoming EMWA Rallies.....	8
Sponsor Ads.....	9

*The Chapter that Rides...*

Chapter P Facebook - "Lexington Area Wings"

# CHAPTER DIRECTORS JOHN & CINDY WOOD



It feels like time is really flying by. July has come to an end, we've survived the extreme heat and of late the torrential rains, much needed of the last couple weeks. July brought us together several times, we enjoyed the Blowfish Baseball Game with @ 30 folks from several Chapters, We traveled to the mountains for a camping/ mountain riding adventure with nine members, and enjoyed a Chapter Dinner together. Our Retiree Ride was canceled due to rain, but a short Ice Cream Ride was added for Sunday, July 28th to get the group on a ride and topping it off with our favorite food. August marks the end of summer vacation for schools with most heading back soon. It also begins with several events on the first weekend, August 3rd with the

Flight of the Dove bicycle event to raise money for Hospice beginning at Presbyterian College in Clinton. We escort the riders on several courses aiding them as necessary, we have seven Chapter Members on board to help out. Our Chapter Gathering will be the following weekend, August 10th. I'd also like to take a trip to Rock Hill for their Gathering at 3:30 pm at a new location. I'll put out the details as the date gets closer, so if you'd like to ride keep an eye out. We have two Chapter Dinners planned for August (13 & 26), along with a Retiree Ride on August 22nd. A big event for Eagle Wings is coming up this month. The second Eagle Wings Rendezvous will be in Green Bay, Wisconsin from August 28th to September 2nd please get your registration sent in. If attending, South Carolina will need volunteers on Thursday. Contact District Directors, Jon & Donna Horning if you'd like to help. September 20 & 21, 2024 the North Carolina Rally will be held at Brown Summit, N.C.,



If you're interested in stepping up to serve as Chapter Director, please get with me. EWMA is showing we have a vacant Staff Position - Assistant Safety/Ride Coordinator. If interested let Rich Kitko or me know.

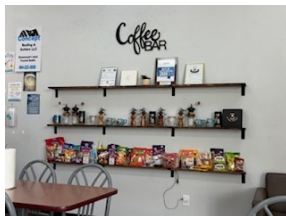
The Lexington Area Wings, Chapter P has been around since April 1997, and I'm hoping we continue the run.

Until Next Time.....

John & Cindy



## ICE CREAM RIDE TO GREENWOOD





## Past Events in June

### Chapter Gathering - Lizard's Thicket

#### Chapter Gathering on July 13th

Visitors came in from Chapter F (Easley) and Chapter S (Newberry)

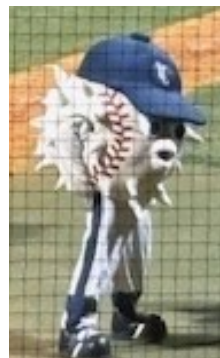
Chapter P Members– We had a good group for our Gathering and after a few words covering past and future events we all shared a good breakfast before continuing with sharing information with our members.

The Quarter Jar was collected by Bill Rickey– it had been growing for a few months. Our 50-25-25 Winners– Rick Ventresco & Mary Coral and Cindy Wood. Congrats to all!



#### ANNUAL CHAPTER P EVENT TO THE BLOWFISH BALLGAME

We had 30 folks from several Chapters come out and enjoy the game along with the all-you-can-eat meal ! Great Time - Thanks Donna for setting things up.





## CHAPTER CAMPING & MOUNTAIN RIDE

We had nine Chapter Members join in on our camping at Ela Campground in Bryson City, NC and some great riding, day 1 took us to the Natahala Gorge, Tail of the Dragon, and the Cherahala before heading to camp. Day 2 -we traveled to Gatlinburg, Hot Springs, traveled the Rattler to Waynesville then onto US 276 traveling past the Blue Ridge Motorcycle Campground, still no bridge. We entered the Blue Ridge Parkway and headed to Cherokee. We rode by the National Park after arriving to Cherokee where the Elk were out in numbers. A quick dinner and back to camp for the night.



## CHAPTER S VISIT



## Assistant Directors & Webmaster Bob and Donna Baum



Since I didn't want to ramble on last month, here's the Part 2 of our bike trip:

You may remember from last month's article; we stopped in Marietta for fuel and dinner. During dinner we decided that since we were only two hours from my parents' house that we would keep going and save the money we would have spent on a hotel for the night. When we came out of the restaurant it was a little chilly, so we put our long sleeve tee shirts on under our mesh riding jackets. After getting on the road, it was quite a bit cooler than we thought and had to stop and put our rain jackets on over our riding jackets. By the time we hit Akron, it was in the mid 50's! In June! Temperature notwithstanding, we made it to Mom and Dad's before dark.

While we were in Ohio, we had the opportunity to spend time with family when no other event (Thanksgiving, Christmas, Easter etc.) was going on. So, it was a little more "quality time". We also had a chance to ride with my brother for a day through the Cleveland Metroparks system.

The Metroparks System is a series of state parks that are virtually connected with one another. You can ride for miles and never leave the park. It was a beautiful tree covered ride that ended at Scooter's World Famous Dawg House in Mentor, Ohio.

The ride home was uneventful, mostly. We left my parents' house Friday morning and made it all the way to Hillsville, VA before dark. Since we were only about 3 hours from home, we were hoping to be home before the heat kicked in. Well, you know what they say about plans.

We stopped in Blythewood for fuel and a little break. I pulled up the pump and tried to back up. The bike wouldn't go in reverse. So, I pulled forward a few feet and tried again. We moved about a foot in reverse before I heard a loud snap! It turns out a single wheel Uni-Go trailer doesn't like to back up. (I knew this but too much time on the road must have made me forget) Turns out I snapped all four bolts that hold the trailer mounting plate to the hitch. We had been pulling that thing for 1700 miles and now I forget it's there!! 50 miles from home! #\$(^)% (expletive deleted)

So, we had a choice, either leave the trailer and hope it's there when we get back or, rely on the kindness of friends. I called Elvin and he mistakenly told me he wasn't doing anything. He and Mary were kind enough to hop in the car and come save us. We put the trailer in their SUV and got on the road. Unfortunately, we didn't miss the heat as we had hoped, it was 102 degrees on I-20 when we passed through, but we got home in one piece just a little sweaty.

Thank you all for reading along and allowing me to ramble on. And a very special THANK YOU to Elvin and Mary for coming to "rescue" us.

As always, if you have any ride suggestions, please let us know. We're always looking for someplace new to see.

Until next time, Fins Up! ...../) .....Bob and Donna





## Ride & Safety Coordinator Richard Kitko



## TEAM RIDING

If you're riding with a group of friends, have a discussion beforehand and select a good, experienced rider to set the speed and the tone for your trip. A good leader will choose a safe speed for conditions, ride smoothly and consistently, make safe passing moves (see below), keep a rearward eye on the group, and provide ample notice when changing lanes, merging, or switching roads, exiting the route for fuel or food, or stopping.

### Staggered Formation

Instead of riding in a direct line, i.e., nose to tail, adopt staggered formation. That leaves an extra bike length of space between you and both the rider ahead and the rider behind. A helpful tip here: Once your group has established a staggered formation, where practical, maintain your position in the for-

mation. By adjusting positions, you can start a ripple effect that makes others change their position too.

### Ride as a Team

Since one mistake or miscue can mess up the entire group, every rider should have their act together before heading out. That means your rest-stop needs are met, your helmet strap is tight, your gloves are on, and your phone and water bottle are stored before the leader fires up their engine. As they say, "Don't be that guy" who delays the group. To avoid doing this, consider your own punctuality and professionalism as a gift to your fellow riders.

### Leave Extra Room

If Daytona 500 drivers and Tour de France peloton riders had larger gaps in the pack, the occasional multi-vehicle pileups might not happen. For motorcyclists then, at higher velocities on the highway, more space buys more time to avoid trouble ahead of or within the pack.

### Make Sure You Can See

Regardless of whether you're riding in organized formation or more loosely tooling along as a group, try to position yourself so you can see ahead. Particularly in a group of bikes, which often ride close together, optimizing your field of view is essential for active safety. And when you feel safe on your bike, you'll have a better experience.

### Keep the Speed Sane

From 30 mph, a good motorcycle and rider can stop in less than 30 ft. But braking from 60 mph will take the same bike and pilot closer to 120 ft. – roughly four times as far. So, as you can see, even with top equipment and skills, the higher the speed, the more space is needed to not simply to stop, but also to brake, swerve, and avoid trouble. If you've taken a DMV written test, you probably already know to extend the following distance as speed increases. Same goes in a group.

### Passing Strategy

Passing protocols are important when encountering slower traffic, particularly on 2-lane roads. (We probably don't need to mention that passing is legal where the lanes are separated by broken – aka dotted or dashed – lines, right?) In general, the larger the group of riders, the slimmer the odds that everyone will be able to pass a slower vehicle or a knot of slow vehicles at once. In this case, the leader should pass first and proceed ahead, with the rest of the riders passing as safety permits. Depending on traffic, eventually the group can re-coalesce.

### Hand Signals

DMV handbooks show the approved hand signals to communicate making a left turn, a right turn, and to brake. Well, the turn signals and brake light on your bike do that for you, but if safety permits, using the braking hand signal, or some facsimile of it, is a nice gesture to the following riders in non-emergencies. (Group riders will often point out debris in the road by pointing with a hand or leg too. That can save misery if the debris happens to be serious, like rock at the apex of a turn.) Mind you, removing your left hand from the grip leaves you controlling the bike with your throttle hand for a few moments. Just remember that emergencies happen quickly, and if one does, you'll likely appreciate having both mitts on the handlebar.

### Remember "Tail End Charlie"

In the WW2 years, the British term "Tail End Charlie" described the last plane in a formation. Well, every ride group has a Tail End Charlie, too. So, what happens if Charlie has a flat tire, luggage is slipping, or the engine falters or runs out of gas? Poor Charlie drops back and pulls over, that's what. And then, who finds Tail End Charlie, and when? Cellphones may be hard to access in motion, and depending on where you are, there may be no signal anyway. A proven way to take care of Charlie is for everyone in the group – from the leader back down the order – to keep the person behind them in sight in their mirrors. If someone behind you falters, because you're looking after them, you will signal, pull over and stop. Soon the rider ahead of you will find you missing and do the same. Soon enough, the message will reach the ride leader too, even if they're way ahead.

## FOR SALE

2012 GL1800  
\$12,750 OBO  
803-767-2644



46,000 Miles  
Audio Comfort XM Navi  
CB Radio  
Bluetooth Audio  
All LED Lighting  
Muth Mirrors With Turn Signals  
Switchback Running Lights With Fog lights  
Trunk Spoiler With Running/Brake/Turn Signals  
Centramatic Wheel Balancers  
Trunk Rack  
Driver Floorboards, Passenger Transformer Floorboards  
Driver's Backrest 6  
Carpeted Saddlebags/Trunk With Saddlebag Liners/Service Manual

*Dates to Remember.....*

**August 3- Flight of the Dove/Clinton-Presbyterian College**

**August 10 -Chapter Gathering/Lizards Thicket**

**August 10-Chapter H Visit/Rock Hill- 3:30**

**August 13-Chapter Dinner-Firehouse Subs**

**August 17- Chapter S Visit/Prosperity**

**August 22 -Retiree Ride/Duke's BBQ-Aiken**

**August 26- Chapter Dinner-Bellis House of Pizza**

**August 28 - September 2- EWMA Rendezvous- Green Bay, WI**

**September 14 -Chapter Gathering/Lizards Thicket**

**\*\*Check your email / FaceBook for changes and additions\*\***

*Dinner Ride*

**Tuesday, August 13– Firehouse Subs 2301 Augusta Hwy, West Columbia 803-764-1940**

**Tuesday, August 26– Bellis House of Pizza 100 Old Cherokee Rd. Lexington 803-356-9734**



Paul Settle 10

Joanne Hoover 14

Joe Galloway 20

Frank Wilson Jr 21

Geri Galloway 21

Jim Wood 28



Bob & Donna Baum 20

Rick & Linda Ventresco 31



## **Chapters in South Carolina**

Chapter SC-A Anderson Karen Higgins  
karen12ewma@gmail.com

Chapter SC-C Charleston Kevin & Becky Thornton  
ktscouter@comcast.net

Chapter SC-F Easley Renee & Eugene Dent  
rdent12345@gmail.com

Chapter SC-G Greenville Paul & Suzette Wood  
SCG.eaglewings@gmail.com

Chapter SC-H Rock Hill Bill & Joy Hurin  
williamhurin@aol.com

Chapter SC-J Myrtle Beach Melissa Timbs  
melscandle2@aol.com

Chapter SC-K Spartanburg Kevin & Mary Brown  
864-680-3468

Chapter SC-P Lexington John & Cindy Wood Chapter-  
SCP@gmail.com

Chapter SC-S Newberry/Saluda Mike & Carla Ammons

## ***EWMA National Team***

Founders of EWMA Anita & JR Alkire Bruce &  
Barb Beeman

CEO Anita Alkire  
ewma.ceo@gmail.com

President Bruce Beeman  
brucebeeman01@gmail.com

For entire list go to:  
eaglewingsmotorcycleassociation.com

## ***South Carolina District Officers***

**SC District Directors**  
**Jon & Donna Horning**  
jjhorning63@yahoo.com

**For entire list go to: [ewmasc.org](http://ewmasc.org)**

## ***Upcoming Rallies***

**August 28 –Sept. 2 , 2024–EWMA Rendezvous - Green Bay, WI**

**September 20 –21, 2024 North Carolina Rally - Brown Summit, N.C**

**October 24-26, 2024 EWMA MS District Rally - Biloxi, MS**

**March 14 - 16, 2025 - Florida District Rally - Gainesville, FL**

**April 24-26, 2025 - Tennessee Rally - Johnson City, TN**

**May 15-17,2025 -South Carolina District Rally, Newberry , SC**

**TBD - Georgia/Region A Ride-In, Dillard, GA**

**June 26-28, 2025- Alabama District Rally -Sheffield, Ala.**





# Midland Air

HEATING & AIR CONDITIONING  
A Service Experts Company

MidlandAir.com  
**866.EXPERTS**

## Welcoming you to your new home?

THERE'S AN EXPERT FOR THAT.



### LET THE EXPERTS TAKE CARE OF YOU AND YOUR NEW HOME.

Now that you've started sorting through boxes and unpacking, take the next step toward moving in with Midland Air Service Experts. For almost 70 years, we've made sure our neighbors come home to well-cared-for homes by offering an extensive array of plumbing, air conditioning, and heating products and services.

With the home maintenance included in a Precision Tune-Up, you'll be able to help extend the lifespan of your HVAC equipment, prevent costly future repairs, and even save on your monthly energy bills. It's the surest way to keep your new home feeling as good as it did on move-in day.

Contact us to schedule yours for **just \$49.99**—our housewarming gift to you.

We're at your service—seriously.

The Experts can take on whatever you need to keep your home comfortable, including:



#### HVAC

- Air conditioning and furnace installation and maintenance
- Air conditioning and furnace repair and replacement



#### PLUMBING

- Drain cleaning
- Garbage disposals
- Water filters and heaters
- General plumbing repairs



#### HOME

- Indoor air quality
- Duct cleaning, repair, and installation
- Attic insulation and solar

### **\$49.99** PRECISION TUNE-UP

HELP SAVE ENERGY AND AVOID COSTLY BREAKDOWNS WITH A PRECISION TUNE-UP  
REGULARLY \$129, NOW JUST \$49.99\*



# CAROLINA Honda

**POWERHOUSE** 

Est. 1962 with Over Half a Century of Superior Customer Service in the Midlands

